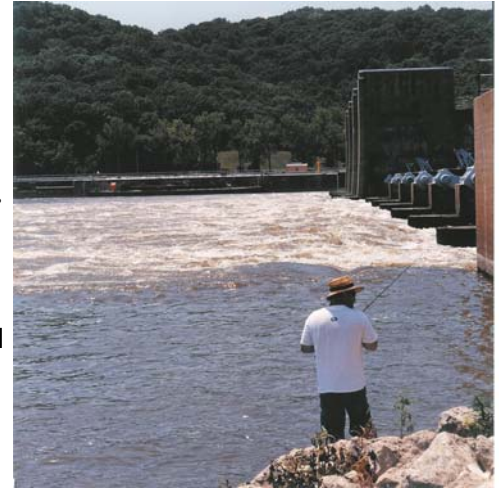


Water Resources

Drainage and flood control has been a key service provided by Klingner & Associates, P.C. since 1905.

Clients who choose our firm to design their water resource projects benefit from:

- The water resource regional leadership of our firm, resulting in numerous cost-effective flood control, environmental and multi-participant mitigation projects.
- Over 100 years of firm experience in hydrologic and hydrology analysis for drainage and flood control issues.
- Our firm's close working relationship with the U.S. Army Corps of Engineers, State DNR and FEMA.



Klingner & Associates, P.C. is a founding member of the Upper Mississippi Flood Control Association (now UMIMRA), representing river interests to over 200 entities in Illinois, Missouri, and Iowa.

Our firm has a proven reputation for developing and maintaining systems for over 25 drainage districts in Illinois, Missouri and Iowa, as well as for municipal and industrial clients with flood protection needs.



The firm, with sub consultant Mead & Hunt, prepared a preliminary permit and pre-feasibility study and report for Mississippi River Hydropower Facilities at three Lock and Dam locations on the Mississippi River.



The firm also assisted the Fabius River Levee & Drainage district (14,264 acres) in their 100-year certification of the Fabius River, reducing residential and business insurance rates by over 300%.

Environmental projects have included wetland development, wetland restoration, and stream bank erosion stabilization.

Photos (top to bottom): Lock & Dam 22 geotechnical & hydro permit; Rock Island Corps of Engineers Illinois River gate replacement; Triangle Lake Wetland Enhancement and Restoration

Water Resources Clients Served:

Partial List:

Aldi Inc.
Bay Island Drainage & Levee District No. 1
Bee-Branch Drainage District
Big Island River Conservancy
Big Lake Drainage & Levee District
Brevator Drainage & Levee District
Camp Point, Illinois
Cap Au-Gris Drainage District
Chariton Drainage District
Clear Lake Drainage District
Corps of Engineers, Rock Island District
Crane Creek Drainage & Levee District
Des Moines County Drainage District
Dot Foods Inc.
East Cape Girardeau Drainage District
Elsberry Drainage District
Fabius River Drainage District
Fort Madison Hospital, Iowa
Green Bay Levee & Drainage District #2
Gregory Drainage District
Hartsburg Levee & Drainage District
Hartwell Drainage & Levee District
Hillview Drainage & Levee District
Hunt Drainage District
Indian Grave Drainage District
Keach Drainage & Levee District
Lima Lake Drainage District



Little Sioux Basin Drainage District
Louisa-Des Moines Drainage District #4
Marion County Drainage District
Mauvais Terre Drainage District
McGee Creek Drainage & Levee District
Missouri Levee & Drainage District
Muscatine-Louisa County Drainage District #13
Musselfork Drainage District
Norris Farms Inc., Illinois
North River Drainage District
Perryville Drainage District
Quincy, Illinois
Riverland Drainage District
Rocky Ford Drainage District
Shoal Creek Drainage District
Skunk River, Ames Reservoir
Sny Island Levee & Drainage District
South Quincy Levee & Drainage District
South River Drainage District
Steffenville Drainage District
Union Township Drainage District
Valley City Drainage District
Waukesha Drainage



Photos (top to bottom): Skunk River, Iowa levee stabilization for Green Bay Levee & Drainage District No. 2; Sny Island Drainage & Levee Dist. FEMA LOMR (largest in nation)

KLINGNER
& ASSOCIATES, P. C.
Engineers • Architects • Surveyors