

Land Surveying

Survey crews are experienced in

- Urban & Rural Property and Boundary Surveys
- American Land Title Association (ALTA) surveys
- Industrial and Commercial property insurance surveys
- Route and Location Surveys
- Topographic and Planimetric Surveys
- Highway accident surveys and data mapping
- Hydrologic surveys
- Cross Sectioning
- Flood Insurance elevation surveys
- Horizontal and vertical control traverses
- Tunnel surveys
- Ground control for aerial photography
- Utility locations
- Construction layout and staking
- Municipal, Industrial, and Private utility and access easements



The firm's land surveyors are registered in Illinois, Missouri, Iowa, Minnesota, and Wisconsin. Survey team members have hazardous waste worker training in accordance with the Occupational Safety and Health Administration (OSHA) and the Resource Conservation and Recovery Act (RCRA).



Clients who chose our firm to do their surveying projects benefit from:

- Over 150 years of combined personnel experience achieved by our five licensed professionals alone, and an old-fashioned commitment to excellence.
- The efficiency of digital data collection and stakeout, integrating robotic Total Station and space-age GPS technologies.
- Flexibility in choice of software to process and report data, including Trimble, SMI, Eagle Point, GeoPak, AutoCAD, Excel and ArcView.
- Accessibility including the capacity for internet data and information exchange and in-house on-line-network project-based archiving of data for quick retrieval.

Photos (top to bottom): Tracking the progress of underground quarries with lasers; use of ATV mounted GPS receiver for rapid data acquisition in areas suitable for satellite reception.

Land Surveying Clients Served:

Partial List:

Adams County IL Highway Department,
Ameren-CIPS
American Insurance Company
American Savings Bank
Audrain County, Missouri
Blessing Hospital, Quincy, Illinois
Burlington Community School District
Burlington, Iowa
Camden-Littleton Water Commission
Can-Am Industries, Inc.
Capital Development Board, Illinois
Carl A. Nelson
Carroll County, Missouri
Chaddock
Clayton-Camp Point Water Commission
Continental Telephone Company
Corps of Engineers, Rock Island District
Dot Foods, Inc.
First Construction Group
General Telephone Company of Illinois
Good Samaritan Home, Quincy, Illinois
Great River Medical Center
Grow Greater Burlington
H & P Enterprises
Hancock County Soil and Water Conservation
District
Hannibal LaGrange College
Hannibal Regional Hospital
Henderson County Drainage District #3
Hickory Kerton Water Cooperative
Illinois Bell
Illinois Department of Transportation
J. M. Huber Corporation

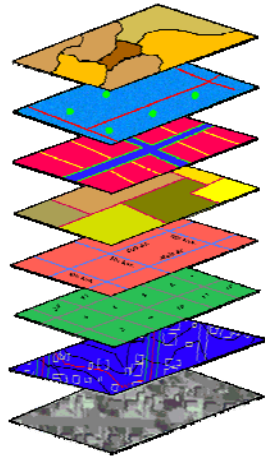


John Mathes & Associates, Inc.
John Wood Community College
Lincoln County, Missouri
McDonalds Corporation
Mercantile Trust & Savings Bank
Merchants Wholesale
Middletown, Iowa
Missouri Department of Transportation
Pike County Highway Department, Illinois
Quincy Medical Group
Quincy University
Quincy, Illinois
Quincy Park District
Qwest
Ralls County P.W.S.D. #1, Missouri
S G Construction
Schuyler County Soil and Water
Conservation District
Shipley Contracting
Shop Ko Corporation
South Quincy Drainage & Levee District
Southeastern Community College (SCC)
Southeast Iowa Regional Airport Authority
Sunset Home, Quincy, Illinois
Two Rivers Regional Council of Public
Officials
U. S. Gypsum
U.S. Sprint Communications Company
Winegard Realty
Waterkotte Construction Company
Woodward-Clyde Consultants

KLINGNER
& ASSOCIATES, P. C.
Engineers • Architects • Surveyors

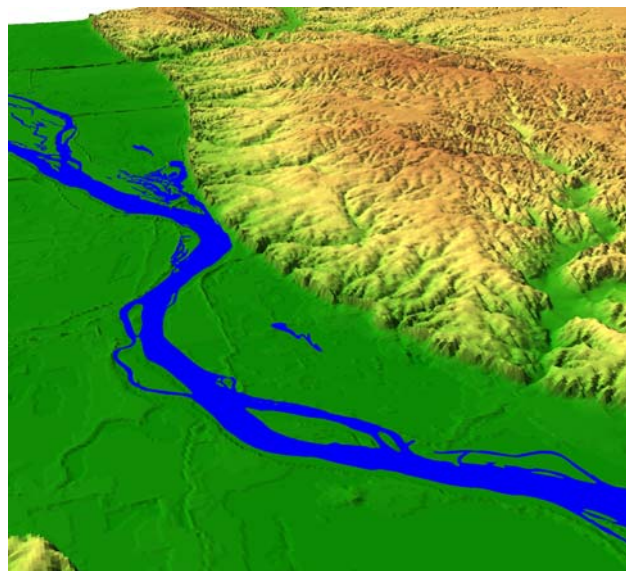
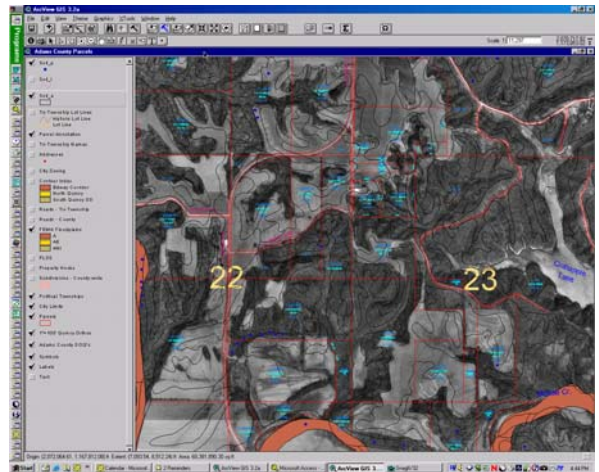
Photos (top to bottom): Nottingham and Lake Marian subdivisions (c. 1985) with Cheshire Hills (c. 1970) and Cedar Ridge (c. 1993) in background; Willow Creek and Breckenridge subdivisions (current).

GIS/Planning



Klingner & Associates, P.C. can assist in the development of municipal and local governmental Geographic Information Systems (GIS). The firm offers a wide variety of consultation services, geared toward a successful GIS implementation. These include identifying the needs of the potential GIS stakeholders, and identifying options for financing the investment in GIS. The firm offers a range of services including surveying, ground control for aerial photography, development of topographic maps and surveys using CAD and GIS software. Klingner & Associates, P.C. employs GIS to develop accurate geospatial infrastructure data in a customized format to meet the special needs of each client.

Facilities can be very expensive to maintain. Decision makers often have limited understanding of the size and value of the infrastructure they manage. Most municipalities and industries have the data and history of improvements and changes, but few have information that is readily available and usable. Operation, maintenance, and planning for future improvements are less expensive with GIS.



Photos (top to bottom): GIS exhibits showing eight primary data layers; Parcel, floodplain and soils layers; Triangulated Irregular Network representation

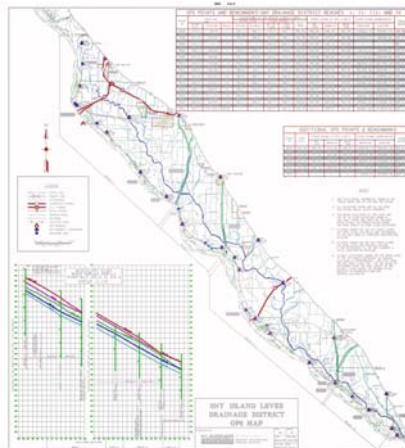
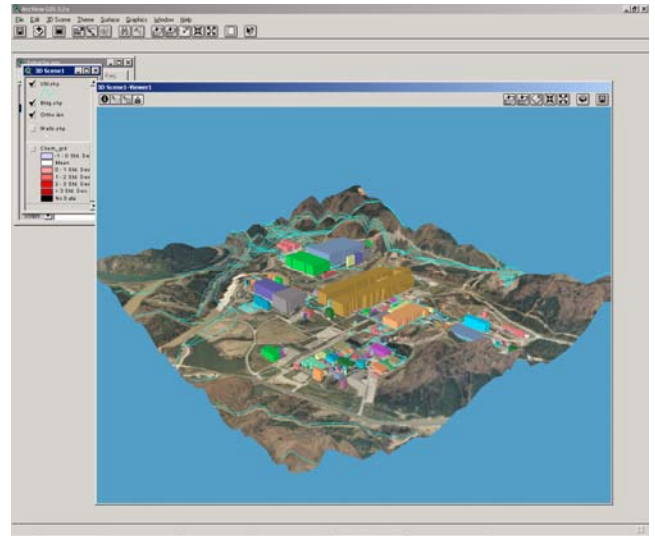
Clients who choose our firm to design their GIS and planning projects benefit from:

- A clearer picture of what they would like their GIS to provide due to our thorough needs assessment and implementation plan process.
- A reduction of costs in GIS implementation due to our RFP preparation and bidding process.
- Development of detailed specifications, resulting in a significant cost savings in GIS layer development due to our engineering expertise and proven methodology.

GIS Clients served:

Partial List:

Adams County, Illinois
ADM Moormans, Quincy, Illinois
Camp Point, Illinois
Coldwell Banker Mays Real Estate,
Quincy, Illinois
Culver Stockton College, Canton
Missouri
Dallas Rural Water District, Illinois
Great River Economic Development
Foundation
Illinois Department of Conservation
Kankakee County, Illinois
Macomb, Illinois
Mays Real Estate



Mid-America Intermodal Authority Port District
Village of Mt. Sterling, Illinois
Monroe City, Missouri
Ogle County, Illinois
Pepsi Cola Bottling, Quincy, Illinois
Pike County, Illinois
Quincy, Illinois
Quincy Association of Realtors, Quincy IL
Quincy Park District
Quincy Public School Dist. #172, Quincy, Illinois
Sny Island Levee & Drainage District
Upper Mississippi, Illinois & Missouri Rivers
Association
Whiteside County, Illinois

Useful GIS links:

Illinois GIS Data
Missouri GIS Data
Iowa GIS Data
Downloadable DEMS, DOQs, etc.
GIS Education
2000 Tiger/Line Shapefiles

http://www.esri.com/data/download/census2000_tigerline/index.html

<http://www.illinois.gov/inside/geographic.cfm>

<http://www.msdis.missouri.edu/>

<http://maps.gis.iastate.edu/isudata/>

www.disdatadepot.com

<http://training.esri.com/gateway/index.cfm>

KLINGNER
& ASSOCIATES, P. C.

Engineers • Architects • Surveyors

Photos (top to bottom): GIS exhibits showing 3D scene in Arcview;
Sny Island Drainage District Drainage Area Study